

Inventor

Caleb Suresh Motupalli

Morphological Analysis and Design of a Super-Augmented Persona for a World Governor

Necktie-Imitating Personal/Corporate Extender (Apparatus) having a
Cyberspace Integrated-Augmented Meatspace for a local/global System with a
Necked Service Oriented Architecture comprising a Cyberspace Super-
Augmented Bridal Metaphor Environment and interconnection of such
Apparatuses imitating Fine-linen Clothes; and Method to Super-Augment a
Persona to manifest a Global Cyborgic Conglomerate Christ/Superhuman

Copyright © 1989 – 2010 Motupalli, Caleb Suresh:

A portion of the disclosure of this patent document contains material which is subject to (copyright or mask work) protection. The (copyright or mask work) owner has no objection to the facsimile reproduction by anyone of the patent document or the patent disclosure, as it appears in the Patent and Trademark Office patent file or records, but otherwise reserves all (copyright or mask work) rights whatsoever.

Acknowledgment

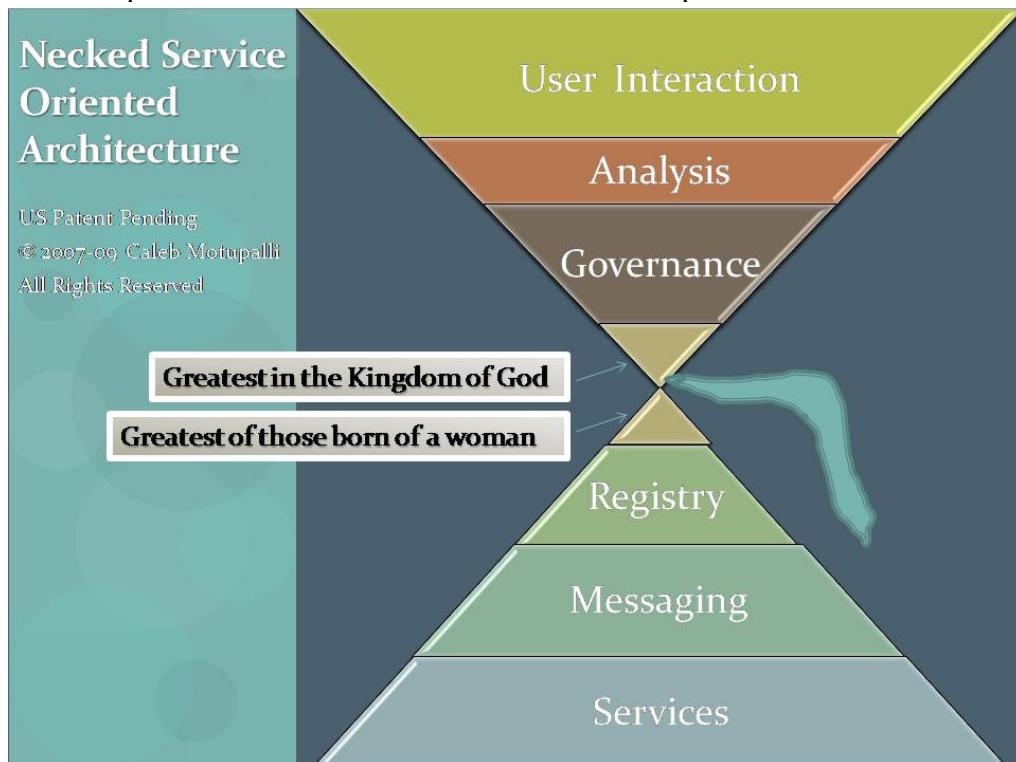
To all the Servants of God, professors and teachers who labored to make me what God had intended that i become.

Contents

ABSTRACT	4
FIELD OF INVENTION	5
BACKGROUND	5
PRIOR ART	5
DISADVANTAGES OF SPECIFIC PRIOR ART	8
DISADVANTAGES OF OTHER VARIATIONS OF PRIOR ART:	9
SUMMARY	11
DRAWINGS	13
BRIEF DESCRIPTION OF THE DRAWINGS:.....	17
DETAILED DESCRIPTION –EMBODIMENT MODE 1A (GLOBAL CYBORGIC CHRIST):	18
COMPONENTS OF THE CYBORGIC CHRIST INCLUDE BUT NOT LIMITED TO THE FOLLOWING:	18
1. THE RIGHTFUL PEOPLE SPACE—A MORPHOLOGICAL ANALYSIS.....	18
2. NECKTIE-IMITATING PERSONAL EXTENDER.....	20
3. FINE-LINEN IMITATION	21
4. NECKED SERVICE ORIENTED ARCHITECTURE AND A LORD’S NECKTIE-IMITATING PERSONAL EXTENDER 21	
5. SUPER-AUGMENTED PERSONA/BRIDESPACE (5B OF FIG. 4TOPSECTION)	26
OPERATION	26
OPERATION OF NECKTIE-IMITATING PERSONAL EXTENDER TO AUGMENT PERSONA OF AN INDIVIDUAL.....	26
OPERATION TO MANIFEST EMBODIMENT MODE 1A—GLOBAL CYBORGIC CHRIST WITH SUPER-AUGMENTED PERSONA (I.E. A CHRISTOCRATIC KINGDOM-IN-DISPERSION WITH A GLOBALIZED FEDERAL)	27
ADDITIONAL EMBODIMENTS	28
ADVANTAGES	29
A) ADVANTAGES OF THE NECKED SERVICE ORIENTED ARCHITECTURE (FIGS. 4MAINFRONT, 4MAINBACK): 29	
B) ADVANTAGES OF THE NECKTIE-IMITATING PERSONAL EXTENDER FOR MANIFESTING EMBODIMENT MODES 1A, 1B, 2A, 2B:.....	29
C) DISADVANTAGES IN PERMITTING THE MANIFESTATIONS OF MODE 0 EMBODIMENTS:	32
CONCLUSION, RAMIFICATIONS, SCOPE:	32
ADDITIONAL ADVANTAGES OF MODE 1A , OVER MODES 0, 1B:	35
DISADVANTAGES OF MODE 1A OVER MODE 1B:.....	38
DISADVANTAGES OF MODES 2A/2B OVER MODES 1A/1B:	38
ADVANTAGES OF MODE 2A/2B:	38
NOTES:	41

ABSTRACT

Necktie-Imitating Personal/Corporate Extender (Apparatus) having a Cyberspace Integrated-Augmented Meatspace for a local/global System with a Necked Service Oriented Architecture comprising a Cyberspace Super-Augmented Bridal Metaphor Environment and interconnection of such Apparatuses imitating Fine-linen Clothes; and Method to Super-Augment a Persona to manifest a Global Cyborgic Conglomerate Christ/Superhuman is disclosed. The User and the Computer are arranged in a manner that the Computational Machine is “Black-box Modernized” into a Necktie-Imitating Mental-Prosthesis augmenting User’s Persona especially his intelligence by overlaying Virtuality on his Physical world—another easily learnable aspect of “tying”. A global network is also modernized into a Fine-Linen Imitation for clothing the Worldspace (physical supportspace) out of which Bridespace (spiritual supportspace) emerges through said filtering method. Super-Augmentation of Persona to manifest a Global Cyborgic Christ or Superhuman is achieved by means of said custom set of assessments, ranking and placement of all in the Necked Service Oriented Architecture. All of which has the embodied cognition of tying a Lord’s (global) Necktie around the World and have dominion. Those who have already subscribed would rule with Him as Bridespace. The rest are expected to either accent or acquiesce as Worldspace.



FIELD OF INVENTION

Electronic Governing System implanted on, around or in the body of humans, animals and machines and specifically those that extend the self/corporate so much so that Global Cyborgic Conglomerate Christs/ Superhumans can be manifested.

BACKGROUND

Prior Art

The Computer, the Robot/Android and the Network-is-the-Computer, all purport to imitate the real life objects, namely the brain, man as a whole, and the nervous system respectively.

John Gage of Sun Microsystems supposedly coined the phrase, "The network-is-the-computer" to describe the emerging world of distributed computing such as with the Internet. Indeed the Internet has become some sort of an "On Demand Supercomputer" for anyone who wants something, so much so that even as early as 2003 an editorial appeared in an Indian news daily titled, "*Is Google god?*"

In the Network-is-the-Computer amorphous architecture, the user is overwhelmed with entropy from n units of information (i.e. with "word-swords" – Ephesians 6:17; Hebrews 4:12; Information Theory by Claude Shannon) coming in all directions from not only n machine-nodes in the grid (Internet) but also from n nefariously intentioned users. It is not just a case of security from malware but security from those who have hijacked the "Network-is-the-Computer" in more ways than those from which we are commonly protected against. For instance any mal-intentioned person with a basic knowledge of the "Network is the Computer" can hijack whole corporations or even governments as demonstrated in the business world today and well publicized in the media as honest and forthright people/ corporations/ nations. Therefore it is not only true that everyone is getting leveled as Thomas L. Friedman observes in his book, "The World is Flat," but also that the mountains are becoming valleys and those that ought to be valleys are becoming mountains. The enemy is reigning supreme to the utter disgust of man who has placed his trust in this current world system. Justice is not being meted out to people as Adam Smith claims would happen in his perfect capitalistic world, where people out of their own self-interest will take care of the poor. Rather, what prevails is a generally accepted global anarchy. For instance, speaking of "On demand Supercomputing" Johnathan Schwartz of Sun Microsystems writes in his Blog: "...by On Demand I mean accessible through a browser, with a credit card...this isn't yesterday's definition of On Demand, involving [blah, blah, blah]. Nope! Our definition is just like eBay's: you bring a browser and a credit card, we offer the service. No fuss, no muss. We believe the simplicity, accessibility and affordability of this service changes the face of computing for all organizations, large and small, public or private... So have at it! Go to Network.com later this week, grab a Paypal account, and experience for yourself what it's like to use

one of the world's largest supercomputers. Without having to house it, manage it, power it, administer it, provision it...or buy it.”

Gone are the days when governments could regulate the dissemination of Supercomputing know-how to thwart anyone using it for military purposes. Today, people can have not just the supercomputing know-how but supercomputers themselves are readily at their disposal. Societies have overemphasized on Science and Technology – on the What we *can* do – and have marginalized humanistic thinking – on the What we *should* do. Artistic activity has been relegated to the mathematicians. We should take advise from Yuri Borev, who pointed out in his book on Aesthetics: “At various periods in our lives most of us engage in some sort of artistic activity, intuitively or deliberately, with varying degrees of success. But only someone with artistic capability can create artistic values of social interest.” The question is: what are these artistic values of social interest?

Slowly the blinders are falling from the public eye. Paul Krugman, the 2008 Nobel Prize winner and columnist of New York Times writes, (Source: Deccan Chronicle 24 July 2007), “What happened to America’s Internet lead? Bad policy. Specifically, the United States made the same mistake in Internet policy that California made in the energy policy: It forgot -- or was persuaded by special interests to ignore -- the reality that sometimes you can’t have effective market competition without effective regulation.”

If the ultimate objective of mankind is to let those who hold to truth and goodness to prevail, then giving unregulated access to this On Demand Supercomputer namely the “Network-is-the-Computer” to every Tom, Dick and Harry is not wise to the nth degree. God is in control and there is no doubt about that; but God wants His people too to be in control, especially His beloved sons in whom He is well pleased. With ever increasing rise of terrorism and faced with dilemmas for preemptive wars, empowering the Royal Priesthood is the current Social Interest. We need to create artistic values to empower the Royal Priesthood!

The domain of Medicine may belong to Medical Doctors and the domain of Aeronautics may belong to Aeronautical Engineers, but the domain of Government belongs to God's holy ones—the Royal Priesthood—because they are *qualified* for that role, knowing Justice and Love!

There is no disputing that both the Computer and the Network-is-the-Computer are good at doing a lot of processing; but “that is more like moving muscle.” Such low level processing is delegated to the machine, and the real and strategic decision making is made in our own minds because the human being is always on top of things making all things his slaves in the end. What is more, this attribute of enslaving is desirable by all humans and God himself issues the divine Magna Charta saying, “*Be fruitful and multiply; fill the earth and subdue it; have dominion over the fish of the sea, over the birds of the air, and over every living thing that moves on the earth*” (Genesis 1:28, *The Holy Bible*).

A question may arise: “What is the disadvantage in designating the machine as a self-thinking machine with the attributes of “situated” and “embodied” (An article on

Sociable Robots, Deccan Chronicle 1 August, 2007), as we can delegate some of the lower level thinking to it?"

Even though this is already being done these days subconsciously and man has learned to accept it; that is not really the goal of the Computer paradigm. What is ostensibly there to assist and help, purports to *replace* humans, beginning with those in "the second wave".ⁱ I am not biased against productivity gains through technology. But just consider: In this culture that harps on woman's liberation...rather than extend and compliment man in a synergistic manner, the Computer too purports to replace man like the feminists of today. The fact that there is so much of fanfare around the new "Sociable Robots" with Bill Gates commenting that Personal Robots are at the same stage that Personal Computers were in the 1970s (Deccan Chronicle 1 August, 2007), is proof that these technologies are trying to imitate not just the grunt work but also the more common traits that make a human, human. Man as a whole is being swallowed up in his own fool hearted policies.

The inventors of the Computer/Network-is-the-Computer/Robot propose self serving machines that are machine centric. The arrangement (Fig. 1) not only places a psychological integration barrier between the user and the machine-network but also speciously purports to enslave humans even though it cannot in the end game. The word "Computer" is indeed a misnomer. But the thugs who are behind these "black box" inventions are clandestinely enslaving the second wave human race using them. You see, we are dealing with intellectual property of all sorts here. All our thinking is first out of our heads and left bare for whoever has access to the inside of the box through the so called "network." Ever since the cat was out of the box, the Computer has taken a lesser role and a whole different meaning has come to it. Now, it even gives respect to humans and comes in many forms. But before we go into each of these forms, an introduction to how technologies evolved is essential.

If one traces back the etymology of terms and names used to define technologies and their jargon, it will become apparent that they had an important role to play, as the technologies themselves. The reason being: objects are what they are because of their embodied cognition and vice versa. In other words, the nature of an object is determined by the form of the object and vice versa. This is true of not only natural objects but technological objects as well, which can be steered in that direction if at all possible. For instance, the first computers could hardly be called computers in the strictest sense of the term because the word computer means: That which can put together thinking. In other words a computer is supposed to be a thinking machine, which, as we know today, it can never be, because thinking entails consciousness. But the inventors of Computers tried to steer the research and development in the direction of attaining a true Turing Machine—a true Computer.

Also, it is a well acknowledged fact and a given, that old technologies could find new uses with the aid of object technologies and other "Black-box Modernization" techniques.ⁱⁱ Systems need not be designed from scratch -- objects only need to be assembled together in new ways and integrated with new user interfaces and viola we

have a new system.

Metaphors are used extensively not only in brand names but also in technology jargon so that the functions of the product they represent become suggestive and operable. These terms bring along with them what is called “metaphor environments”—the upper-level user interfaces over on top of the physical media—which serve as “handles” to operate the objects they represent. As early as biblical times, it is a known fact that people think of new concepts/things in terms of what they already know about old concepts/things. So “people learn and retain concepts pertaining to one system by metaphorizing what they already know about another”.ⁱⁱⁱ

Metaphors are such powerful learning tools so much so that whole architectures of systems or subsystems they encapsulate get readily programmed in the minds of the users and thereby they can intuitively use the features of the system architecture and also retain them in memory. In other words, there is high information economy in the use of metaphors to cognitively represent systems. A single Metaphor can be used to wrap a whole system through its Metaphor Environment. Thus targeted design of computing systems using metaphors of a specific domain made technology. They imitated those real life objects brought by the metaphor.

Disadvantages of Specific Prior Art

1. **Remote Control System:** It is demeaning for a context where humans are part of the system.
2. **Answering Machine:** Callers can be screened before receiving the call but function wise, it is limited.
3. **Microprocessor:** Though Very Large Scale Integration is spoken of in connection with this, it does not “incorporate,” objects in the environment, full with head and body, let alone incarnate, because of the crude and obscure Imitating Real Life Object.
4. **International Business (Electronic) Machine:** Ambiguous if used in today’s context.
5. **Personal Computer:** Though better than sociable “Personal Robot/Androids,” the arrangement, which sets the user at the same level as the machine, does not take into consideration the user's strengths at the system design and specification stage to be called a user centered system. Moreover, the Computer relic inhibits the electronic machine to be perceived as a real extension to the mind. It impedes research because it limits our thinking of the machine as a mere substitute to the human mind rather than as a compliment and an infinite extender. There is no deliberate synergy because both the human and the machine are meant to operate independently. Mechanical models transliterated to computers are always less efficient. Operating the machine in the same paradigm as the human computer, new ways of operating the machine are

precluded—the user is limited to essentially that which could be done in the world of human-to-human interaction. Reliance on human-to-human communication paradigms have blinded the designers of prior art GUIs such as the PARC User Interface to the far greater potential of the machine to extend the user/corporation.

6. **Think Pad:** Though it tones down the purporting... the word, “Pad” minimizes the power of machine.
7. **“Windows” or “Gateway” or “Vista”:** Though these also tone down the purporting, they reduce the user to a passive spectator, which at the most lends itself to a serendipity tool.
8. **“Explorer” and “Browser”:** tones down the power of the machine to a mere serendipity tool.
9. **“Active server” (pages) / Web Services / Service Oriented Architecture / Infrastructure as a Service (Fig 3a, 3b):** Though they “serve,” they are inadequate user interfaces with poor metaphor environments because they do not “marry” the system architecture with the rightful and essential user(s) to form one whole while also giving respect to those user(s). They are merely *Servant Computers!* Thus they are more difficult to *learn* than my embodiments. Moreover, the Service Oriented Architecture (Fig. 3b) does not “neck”—a desirable feature for governance—the amorphous network (see Internet Map in Fig. 3c), which is today more like a prairie land. Even though some of the above inventions give respect to the user, they do not help to expressively extend or augment the power of the user by incorporating in the *user* (meaning, in the rightful and essential user) every other objects' power in his realm/domain. Secondly, while purporting to be something it can never be (though Computers are used to subdue and enslave others in a clandestine way), the Computer—even Servant Computer—inhibits the machine-network to be perceived as a real complimenting infinite extender to the user to serve and augment his persona.

Disadvantages of other variations of Prior art:

10. **“Red Hat” (inadvertently named) Linux:** Though the arrangement is suggestive of an extension of the mind, it places the user himself under the machine's control, so to speak, while also rendering the machine itself a passive object in view of the passive nature of Hat Metaphor Environment. Another disadvantage when compared with my invention's arrangement is that it does not provide for the integration of the real environment as well with Cyberspace. My embodiments have a Cyberspace Integrated-Augmented Meatspace User Environment.
11. **“Digital Nervous System”:** Though it imitates the head-and-members-of-the-human-body, it is still machine centric in that it is only “digital,” making the Computer the head (CPU/ the Central Nervous System) and all the other members *including* the users—all of whom use the PARC User Interface—as

slaves in the Peripheral Nervous System. My embodiments have the User as the Head and the Apparatus as the Neck and the System as the Peripheral Nervous System.

12. **“Head and Members of the Body” or simply put, ‘Corporation’ by Apostle Paul in the Bible:** Though the thus constituted corporation—an invention of the Service Industry—imitates the real life body, exploits the head-and-members-of-the-body metaphor environment and it also places the Chief in the head position in the arrangement or architecture. But it is still only Fleshspace/Meatspace. My invention incorporates in the Fleshspace even Cyberspace in an overall system composition. In my embodiment of the invention the Spirit operates from the Neck up as well as below. He is the preeminent One that pervades and controls the Bridal Metaphor Space or Environment.
13. **“Personal Digital Assistant”:** Though this comes close to what we are proposing, in that it is an assistant, it still purports to replace the human assistant rather than augments her. It is also too verbose and people are forced to use the acronym, “PDA,” which means nothing for someone who does not know the device. Moreover, it does not represent the integration aspect. My invention is succinct with high information economy.
14. **Other kinds of Prosthetic devices:** These again try to substitute; for instance a leg if there is no leg etc. These do not capitalize on the remaining faculties of the body especially with the brain that can perceive with other senses and accomplish the same task by controlling other equipment.
15. **Enterprise Service Bus (ESB):** Only useful in the framework of a network. But the Network still remains amorphous.

Moreover, the common problem that runs through all these inventions is that they empower in a clandestine manner anyone who gets their hands on these inventions, while the rightful humans are left to skimp for themselves.

SUMMARY

I discovered a better way for solving such problems as well as other problems that the human kind faces at large for justice, peace and wealth. My architecture and method—of one embodiment—first sets each member/citizen with a Necktie-Imitating Personal Extender on, over or in their body. Necktie is spoken of in a figurative sense and applicable only at the System level. (And strictly speaking, hardware for the Apparatus such as ones depicted in Figs. 0-Hardware, 0-StylizedHardware can mislead the public if labeled, “Necktie”.) Each member’s proximity Meatspace or Persona is augmented by overlaying it with the Extender generated Cyberspace.

The said System embodiment (s) are an improvement over the Prior Art namely, the Bride-of-Jesus-Christ (corporation) Metaphor Environment, which is spread across the whole globe, in keeping with what Apostle Paul wrote in The Holy Bible--hereafter simply referred as *Bridespace* (i.e. spiritual support-space). However the *Bridespace* is without a proper shape or structure except for the supposed inbuilt organizational hierarchy. Now consider Revelation 19:8 NKJ Bible: “Let us be glad and rejoice and give Him glory, for the marriage of the Lamb has come, and His wife has made herself ready, And to her it was granted to be arrayed in fine linen, clean and bright, for the fine linen is the righteous acts of the saints.” Consider also 1 Timothy 2:9-10 NAS Bible: “Likewise, I want women to adorn themselves with proper clothing, modestly and discretely, not with braided hair and gold or pearls or costly garments but rather by means of good works, as is proper for a women making a claim to godliness”. A *Fine Linen Imitation* for clothing the worldwide *Bridespace* is obtained by interconnecting synergistically (giving the perception of overlaying) all the Extenders (apparatuses) of Saints. This translates into a global network of GOODS & SERVICES supplied or procured by them. It signifies that the *Bridespace* is ready for her wedding with her husband—to be “tied” to Him.

Separating the Bridespace (spiritual support-space) from the Worldspace (physical support-space) in the first pass of the filtering process is prophetically supposed to fulfill the separation of the Sheep from the Goats. The Necktie that is typically worn by businessmen is here held to be a prophetic Mark existing on man through the centuries to signify the unifying work of the Holy Spirit—who is the invisible controller and the preeminent Lord—in restoring man to his original perfect state to be in fellowship with God, even as man synergistically cooperates and works in concert with Him (Holy Spirit) and also with the rest of mankind with the use of such an Extender. That is, the necktie signifies that missing part in the perfect body of a human. This cooperation with God in turn represents the GOODS & SERVICES of our having subdued the elements of the

earth, in keeping with “the divine Magna Charta” given to man in Genesis 1:28 (Scofield Study Bible). The consummation of the said wedding is when a *Lord’s Necktie-Imitating Personal Extender* (shown in Fig. 4MainBack) is “tied” around *Worldspace* that is yet without a neck. For this, the members of the Body are filtered through a custom set of standard assessments for some to be at the top as *Bridespace* and some to be at the bottom as *Worldspace*. And each one is ranked and strategically placed for synergy in the System (body) with a *Necked Service Oriented Architecture* so that it has a shape for operation, full with a *Lordspace-Neck/Service-Broker* (5A shown in Fig. 4MainFront). The thus constituted *Cyberspace Augmented Bridespace* (5B shown in Fig. 4TopSection) enables the manifestation of Cyborgic Christs. Apostles/Ambassadors, who are chiefly indwelt by the Lord, the Spirit, may use such *Super-Augmented Personae* as eThrones. Thus it is asserted that a union with the divine is possible for mankind by means of such a Necktie-Imitating Personal Extender, which extends him into both space and time (eternal life) and to solve all his problems.

DRAWINGS:

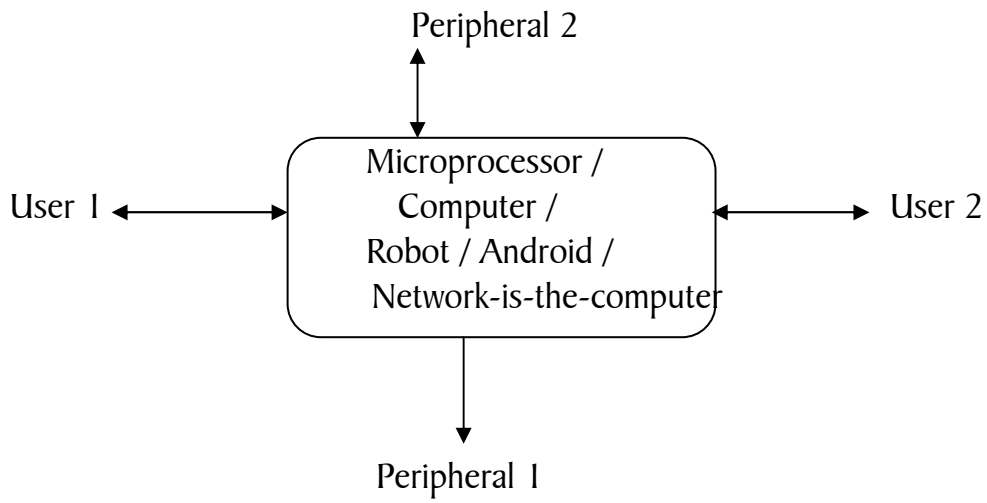


Fig. 1: Machine centric Architecture (Prior Art)

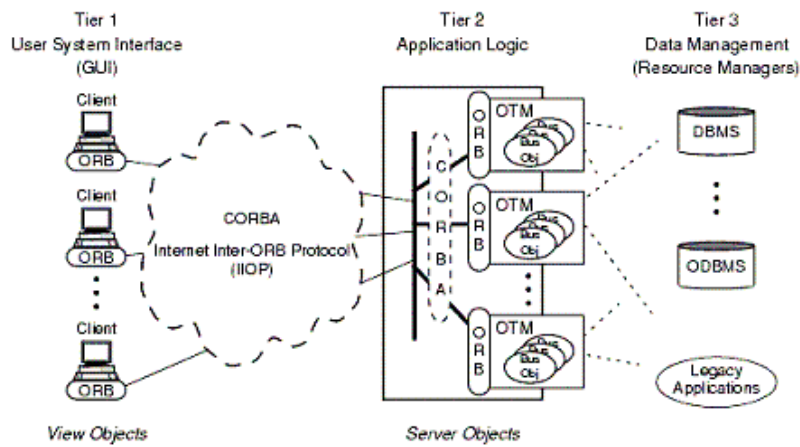


Fig. 2: Client Server Architecture (Prior Art)

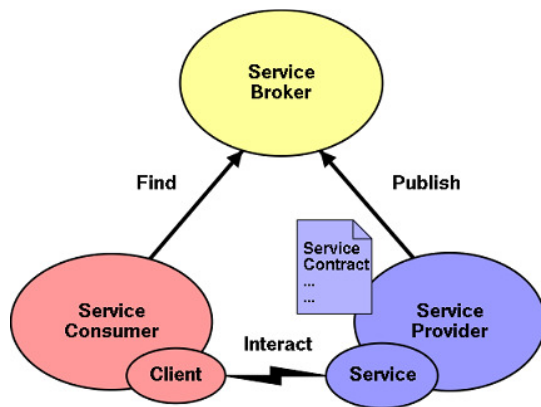


Fig. 3a: Service Oriented Architecture (Prior Art)



Fig. 3b: Building Blocks of Service Oriented Architecture (Prior Art)

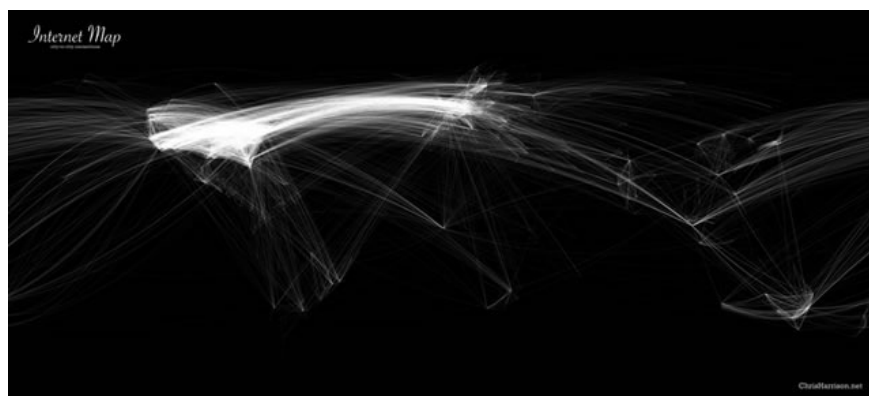


Fig. 3c

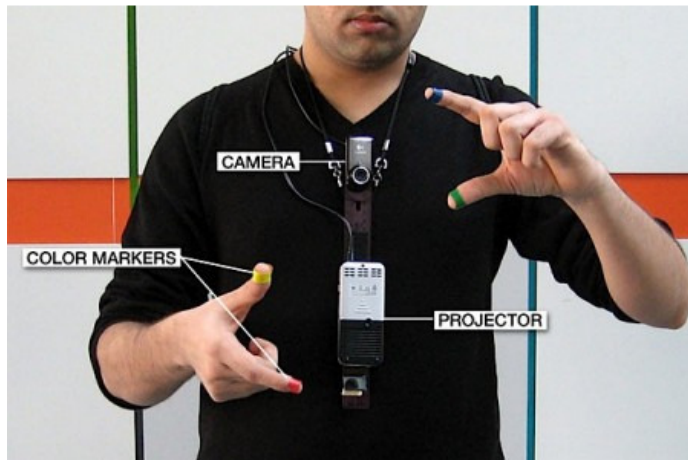


Fig. 0-Hardware (Misleading art)



Fig.0-StylizedHardware (misleading art)

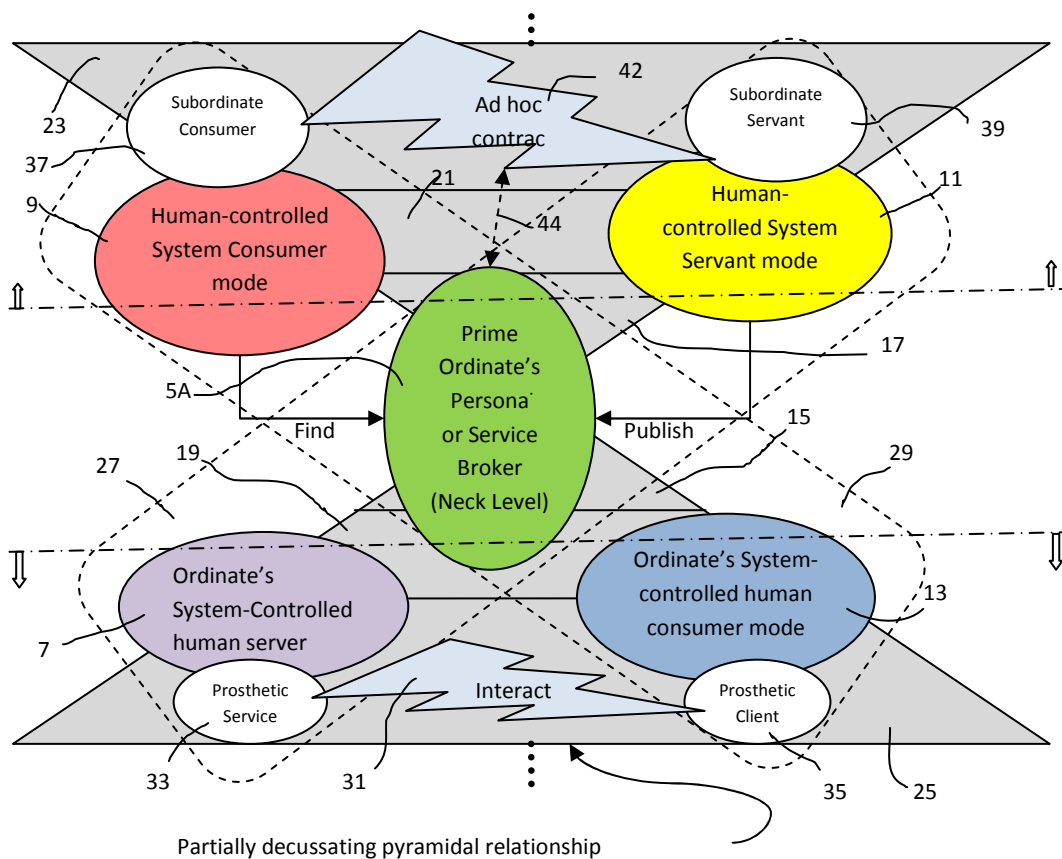
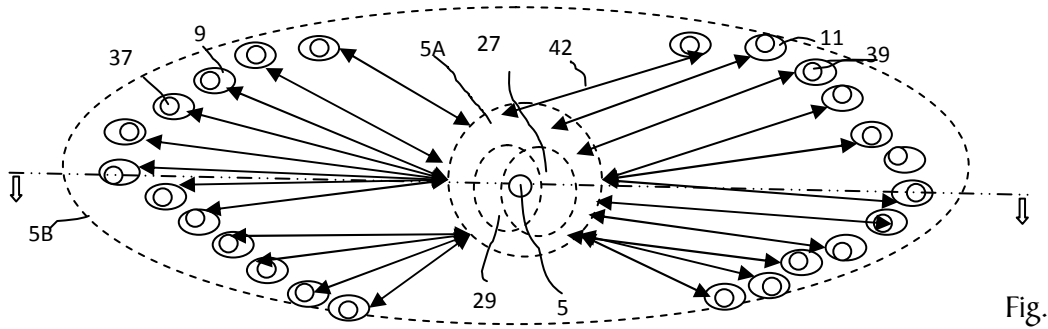


Fig. 4MainFront

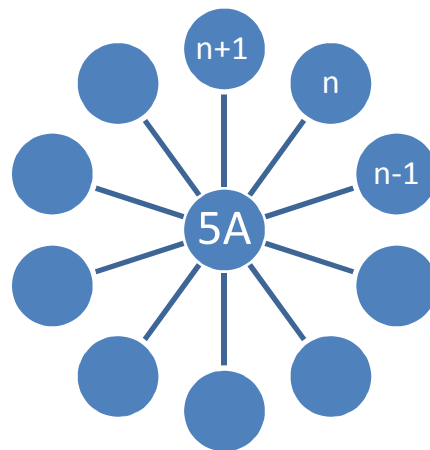


Fig. 4BottomSection

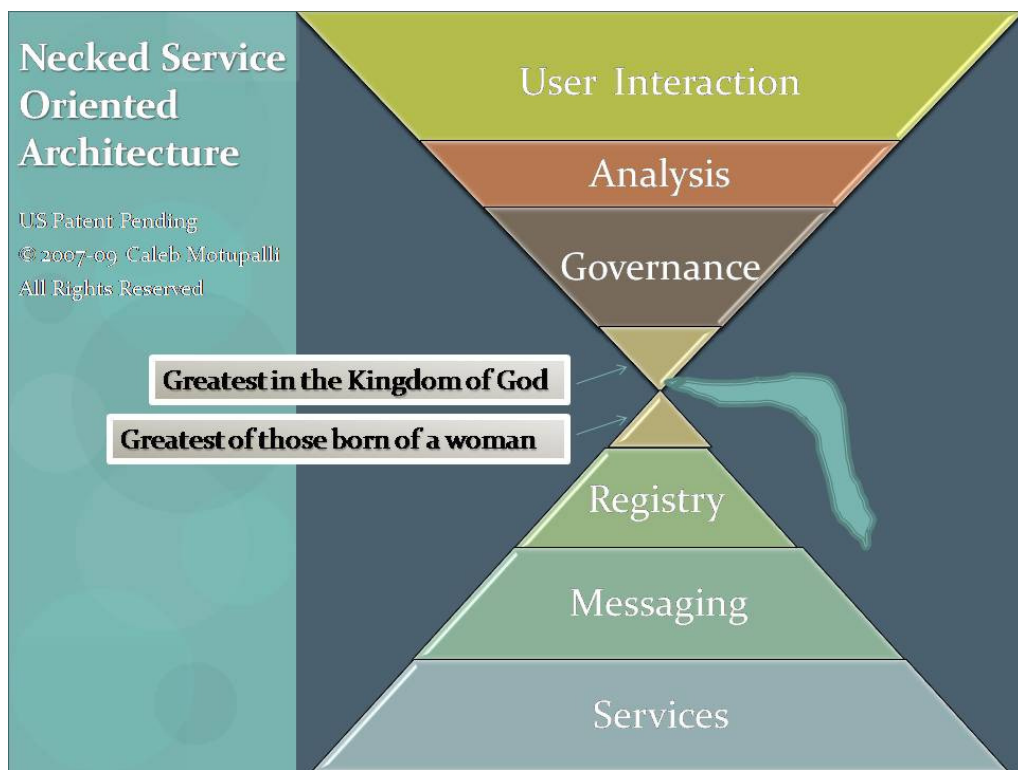


Fig 4MainBack

Brief description of the Drawings:

In the drawings, closely related figures have the same number but different suffixes.

Fig. 1: Machine centric Architecture (Prior Art);

Fig. 2: Client Server Architecture (Prior Art);

Fig. 3a: Service Oriented Architecture (Prior Art);

Fig. 3b: Building Blocks of Service Oriented Architecture (Prior Art)

Fig. 3c: A global Network in the form of Prairie lands;

Fig. 0-Hardware shows one literal embodiment of the Mental-Prosthesis as a Neck-tie imitation;

Fig. 0-StylizedHarware also shows further another literal embodiment of the Mental-Prosthesis as a Necktie imitation;

Fig. 4TopSection view shows what the governing environment is like with 12 e-thrones to the left and 12 e-thrones to the right for the Elders (Revelation 20:4);

Fig. 4TopSection view shows what the governing environment is like with 12 e-thrones to the left and 12 e-thrones to the right for the Elders (Revelation 20:4);

Fig. 4MainFront view shows the functional view of the architecture with the blocks of the Necked Service Oriented Architecture in the background;

Fig.4MainBack view shows the building blocks of the Necked Service Oriented Architecture distinguished with the tapering resource requirements as it comes to the middle; thus enabling governance;

Fig. 4BottomSection view shows how n-entropy space is handled to reduce the entropy at each level;

Fig. 4BridgedEnvironment shows a sample where Meatspace and Cyberspace are bridged.

DETAILED DESCRIPTION –Embodiment Mode 1A (Global Cyborgic Christ):

The word *Persona* as defined by analytical psychologist C.G Jung is an individual's social façade or front that reflects the role in life, the individual is playing. And the word *Cyborgic* is derived from Cyb[ernetical] + Org[anic] where Cybernetics is the study of systems in terms of what they do rather than as machines of what they are.

Components of the Cyborgic Christ include but not limited to the following:

1. The Rightful People Space—A morphological analysis

Peter M. Foreman observes (to some extent) at ICAO Rio Conference 1998: Rather than produce humans with unprecedented capabilities at a later date by developing generalized systems for anyone, it is not only easier but also right to include the rightful humans in the system design and specifications right from the start. Therefore, in developing for instance effective Governing Systems, God's holy ones need to figure in

the system specification and design right from the start. And in developing Medical Systems, domain experts namely doctors need to figure in the system specification and design right from the start, etcetera.

Therefore first and foremost “components” are people—the rightful people.

We arrive at the rightful people by ranking even the gods whom people worship.

First off, “macroeconomic difficulties need to be addressed by macroeconomic remedies,” agrees economist Jagdish Bhagwati.^{iv} But secular men can provide remedies, if any, at the most for a nation because their broad vision can extend only so far as their own country’s borders. A case in point is climate change. One of Britain’s most eminent scientists (Lord May), who is an atheist, has recently said that the world may have to turn to religion to save itself from catastrophic climate change. He said, “A supernatural punisher maybe part of the solution.”^v You see, global polity is in the purview of God alone and not some G-7 or G-20 states, in which case it would only be hegemony. Hence, providing a legitimate and yet viable global polity of morality, falls squarely in the plates of God’s elect.

Moreover, as W.T (Ted) Hind reasons: “Since societies cannot avoid legislating morality, then societies should legislate God’s morality.”^{vi} So who is this God of the elect whose morality forms the basis for legislation? Thus says the Holy Spirit: *“As for God [of the Bible], His way (the morality embodied by Jesus Christ) is perfect; The word of Yahweh is proven/tried [with the life, death, burial and resurrection of Jesus Christ as attested by a cloud of witnesses]; He is a shield to all who trust in Him.”*

Jesus, who cried to the Father before His crucifixion, *“Yet not as I will but as You will,”*^{vii} kept the *spirit* of the Law of God, while His contemporaries were wishfully applying the *letter* to suit their own selfish ends. It follows then that the Law of the indwelling Spirit of Jesus is what needs to be legislated, with the Acts of the Apostles—Chief Apostle being Lord Jesus Christ Himself—becoming the *Precedent*. Therefore emphasis shifts from legislation to the legislating body—the Bride of Jesus Christ—which also does the interpreting. The Church/Bride alone is the common denominator that every country has. She alone can orchestrate care, globally through her Ambassadors.

Thus, in drafting the *specifications* for the User in such a Christ-headed User-centered and ranked Support System, for instance in the domain of human government, we would have: one who is “poor in spirit”/“meek” (Matthew 5:3, 5); or “humble” (Matthew 18:1-4 NASB). That is, someone who is submissive and has proved himself to yield to good governance and authority himself. Which narrows our search to a Christian who has humbled himself to such an extent that he died to self and was born again in Christ Jesus.

Christians from all over the world as the Rightful People Components!

Unlike in the days of Jesus where He was the sole anointed, to be Christ today means to be enjoined with a corporate/conglomerate entity where every member is anointed or indwelt with the Holy Spirit. "The Lord (today) is the Spirit" (2 Corinthians 3:17-18), who pervades and rules in and through the Bridespace. The Necktie as said earlier represents Him. To head the body of Christians we would have the Apostles, Prophets/Priests, Teachers, etcetera in that order (1 Corinthians 12:28), who have willingly become slaves to righteousness through the Spirit (Romans 6:19, 22). They will rule the world as Ambassadors of the kingdom of heaven. They are not Kings but rather Ambassadors because they are in the world but not of it—they are citizens of heaven. And to head them is the Lord, who is the Spirit (2 Corinthians 3:17). Thus God will be shown to manifest as the Head of the Lord Jesus Christ, and the Lord will be shown to manifest as the head of all Man, and Man as the head of Woman (1 Corinthians 11:3).

2. Necktie-Imitating Personal Extender

As for the *specification* of the Cybernetic component—targeted design while exploiting the capabilities of the essential human beings make good design and economic sense because, as said earlier, it is easier to change technology at the design stage than it is to produce humans with unprecedented capabilities at a later date. In order that the machine aka Computer, works toward extending the human's mind as well as the members of the body beyond their conventional boundaries, rather than replacing them, i have reinvented the machine through Black-box Modernization technique, as a Necktie-Imitating Personal/Corporate Extender. The Hardware for the apparatus is ubiquitous. Figs. 4Hardware, 4StylishHardware show hardware that can be misconstrued for the said Extender.

To a question, "Where is the brain,"^{viii} and if the "self" is associated with the brain, one might expect to have the same answer as the question, "Where is the self?" For most everyday purposes, we plainly feel that our self extends out of our skin. However, much of what is inside the skin is not crucial to self—we are still who we are without many parts of our body. On the other hand, anybody who works intimately with tools knows that one's self extends out into the tool. When you drive a car, you feel the tires on the road. When you write with a pencil, you feel the texture of the paper through the tip of the pencil, just as clearly as if the pencil were an extension of yourself. And of course for many of us, our sense of self even embraces family and friends and out beyond.

It cognitively represents an Extender of the Self through the Necktie Imitation and results in a high bandwidth interaction for those who need to learn and member the Body with the Necked Service Oriented Architecture (described next) or be the said Cyborg.

The way a Persona is augmented by means of the said Necktie-Imitating Personal Extender is mentioned subsequently.

Going a step further now in our black-box modernization technique, as shown in Fig. 2 (Prior Art), Distributed Object Technology and its middleware are providing for us the necessary integration technology for collating, while the browser and the web are providing the necessary extension technology and viola again: we have a Global Personal-extender/Environment-integrator. In other words a Global Cyborg (machine-man) can be realized because the Necktie-Imitating Personal Extender “wraps” the newly assembled system with new and unexpected concepts as enumerated in the Advantages.

Thus the Necktie-Imitating Personal Extender is an extension of self to the far corners of the world by means of a global network.

3. Fine-Linen Imitation

A global network of such units of the Apparatuses, which translates into the GOODS & SERVICES they offer together with the users, constitute a means for making a Fine-Linen Imitation, which serves as clothing for the Bridespace (Bride-of-Jesus-Christ Metaphor Environment) or Spiritual Support-space.

4. Necked Service Oriented Architecture and a Lord’s Necktie-Imitating Personal Extender

The global network or the Internet of today can be likened to the Spirit of God, who, in the beginning, "was hovering over the face of the waters" that had become the waters and the air. In other words, there was no concentration of the Spirit of God in any specific place—all were necessary and all were about equal, at least in the minds of most socialistic democrats of the world. The metaphor here is one of a flat bedded grass field or prairie lands (Fig. 3c). The network has made the world flat. The world is like a blob that is amorphous and therefore anarchic.

But the glory or exaltation (height) that is to be revealed in man--the perfect man, which is Christ--is not to be limited to that of a "grass plant". His self today extends throughout our environment (natural, built and social). In other words, there is a flow of the abstraction called "love" (service) throughout the environment, so to speak, "to the ends of the earth." According to the 80/20 rule, this flow is coming to "fluid" earth, 80 percent from top-down to those 64 percent of people below in the bottom upright pyramid as well as 20 percent from bottom-up to those 16 percent above in the top inverted pyramid in Figs. 4MainFront, 4MainBack^{ix}. In this manner approximately 80 percent of the earth is covered with this flow. But the reciprocal flow abstraction called "respect" (compensation/remuneration) is not yet realized. If 100 percent of the earth is to be covered with the flow of "love" then appropriate reciprocal flow must be forthcoming and maintained.

The "kill-and-grab" axiom perpetuated by the "Spider Web Metaphor Environment Control System" aka World Wide Web is very handy for corporations to command "respect" and therefore has to be improved for further penetration into the world. Unfortunately, the "kill-and-grab" axiom of the prior art "Spider Web Metaphor Environment Control System," which is really intended for games, has the effect of filtering out potential good men/corporations from using it due to its "evil" connotations in the name and therefore it is unacceptable for all high-ended purposes such as those of Christ. Now imagine all members of our body were NOT assembled as in the erect posture of the real man. That is, all members together, which constitute the body, were only a mass of jelly, having no shape or form. The body was only so tall as each cell's height. Meaning, the body was flat on the ground like a blob. The reason being the World is Flat^x. Assume now, God took something like a Necktie and began to "collate" (integrate by standard Object Oriented Analysis and Design techniques and order by ranking) one member with another member or a plurality of members "in" a third member of the body in the already wrapped-up (as with Fine-linen clothing) membership of the Network, which was by virtue of their online status. All citizens of the world are first brought directly or indirectly under the authority of Christ or Lord through evangelism and other peaceful geo-political campaigns such as the macroscopic evangelism by the Pope or by televangelists like Dr. Billy Graham. Those who believe the message (partly contained in this document itself) would Subscribe and some who do not believe would at least give Accent and the rest of the world are expected to Acquiesce given the security issues of having Mode 0 Embodiments (explained later) floating around. Thus all citizens of the world, it is contemplated, are collated into a blob, which is yet to be structured such that there is an inverted pyramidal structure in the head and an upright pyramidal structure in the body.

The system of human government such as those found in the Church as stated in scripture, have a hierarchical architecture built-in (1 Corinthians 12:28; 1 Corinthians 11:3 New American Standard Bible), which is neither too heavy at the top nor too flat at the bottom for comfort. This kind is suitable for everyone to take their own initiative at work. Moreover this is just the kind of architecture that can be built by integrating Cyberspace and Meatspace by removing all the redundant bureaucracy, even as User's Persona, specifically his Intelligence, is augmented with Virtuality Integration as shown in the Operation of the Necktie-Imitating Personal Extender. Therefore, exploiting that built-in hierarchical structure, each member of the Church is arranged after proper Assessments in a synergistic Necked Service Oriented Architecture as shown in Figs. 4MainFront, 4MainBack, made possible with Necktie-Imitating Personal Extender for each member/citizen and Lord's Necktie-Imitating Personal Extender for each level under consideration. The relative sizes of each of the blocks indicate the tapering requirement for resources in those blocks. In the top namely in 17, 21, 23, members are ranked in that order chronologically. That is from bottom to top. Whereas in the bottom Pyramid namely in 15, 19, 25 they are ranked in that order from top to bottom chronologically.

So now, if one were to make an extender for the Lord, which is the Mode 1 Embodiment (where Users are the Rightful Users) of this invention, it would need to encompass everything in the whole environment because He is Lord of all. Everything in the environment should work for Christ and Christ should be able to serve vice versa for everything in the whole environment. Since to be greatest is to be a servant of all—a prime minister. In other words he is figuratively the least in the kingdom of God. We also have another equation where the least in the kingdom of God is greater than the greatest born of a woman (Matthew 11:11 NAS Bible).

Therefore we have two Pyramids, one inverted, which is—all those born of God (John 1:12 NAS Bible)—the kingdom of God (17, 21, 23 shown in Fig. 4MainFront), and a second upright, which is of the world—all those born of woman (15, 19, 25 shown in Fig. 4MainFront). Fig. 4MainBack also shows the placement of the greatest born of God and the greatest born of a woman.

And finally the Neck itself has to be membered in order that the head (Top Pyramid) exercises control over the body (Bottom Pyramid). Now in the present state of the embodiment of the invention, the Bridespace Blob is supposed to be on the top, and Worldspace Blob is supposed to be at the bottom. But both the blobs are in reality enmeshed together with all the members of mankind along with all their things in our natural, social and built environments, virtually flattened by the Internet (Cf. "The World is Flat" by Thomas L. Friedman). All of this gives the embodied cognition of a cocoon or a Bride dressing up with Fine-Linen Clothing. That is, a *Fine Linen Imitation* for clothing both the worldwide *Bridespace* Blob and Worldspace Blob has been in use over the years. Their respective cyberspaces (*or Free-Labor-Spaces*) had been generated by means of the global network of GOODS & SERVICES procured or supplied by them. This in effect augments all the *Personae* therein, both Saints and Crooks alike in a Network Blob. Therefore at first pass of the filtering process, the Subjects who were willing (Subscribers) and who have already come under the rule of Christ are earmarked to be on the Top Pyramid (Bridespace) of the Necked Service Oriented Architecture where control need not be exercised explicitly. Those who are giving accent or acquiescing are earmarked to be in the Bottom Pyramid (Worldspace). However the Neck, who has the highest rank in the body, does not have dominion over the whole body of mankind as yet. The control is achieved by first using a hypothetical weak member (weak in terms of what it really takes to control a whole mankind) at the neck for now. Thereby the strength of the members in the head is magnified to the Worldspace in the weakness of the Neck (2 Corinthians 12:9 NAS Bible). For, the Lord Jesus Christ's grace—which is exhibited by means of the Bridespace's Fruit of the Spirit (Galatians 5:22-23 NAS Bible)—is sufficient for him (Neck).

Now honor needs to be given to whom honor is due, tax to whom tax, and custom to whom custom, and fear to whom fear (Romans 13:7 NAS Bible). Therefore, secondly, the two halves are taken through the second phase of the Filtering process. A custom set of assessments are applied in each of the Blobs to determine if those persons belong there in the first place and if so where they have to be placed. Custom assessments are used for the purpose of ranking/grading for appointment in the Pyramids of the Necked Service Oriented Architecture.

Each member in the Kingdom of God who has had a born-again experience, such as one of having gone through the process mentioned in "*Be Born Again*",^{xi} is deemed to be in the Bridespace and is assessed by custom appraisals, namely: **Wagner Modified Houtes Questionnaire, Personality Type Assessment, Leadership Style Assessment, Aptitude tests, Domain Experience assessment.** But other assessments such as **S.H.A.P.E.**, by Rick Warren of Saddleback Church, CA, USA, can also be used. After this assessment he is virtually *lowered* by appointment in the Bottom-up Pyramidal Building Blocks (Fig. 4MainBack; cf. Fig. 4MainFront 23, 21, 17) in that order towards the center. As for the rest (Worldspace) each is raised in the Top-down Pyramidal Building Blocks (Fig. 4MainBack; cf. Fig. 4MainFront 25, 19, 15) after other custom set of complementary assessments are made.

In order for the Neck (5 shown in Figs. 4MainFront, 4TopSection, 4BottomSection) to maintain its control of both the body (Worldspace) and the head (Bridespace), the head or the Top Pyramid is split into two, "left brain" (presently shown in the Consumer mode) and "right brain" (presently shown in the Servant mode), both of which serve either of (XOR) the two roles: Human Controlled System Servant mode (11) over a Service-end of Lord's Necktie [Imitating Personal Extender] (27) and Human Controlled System Consumer Mode (9) over a Consumption-end of Lord's Necktie [Imitating Personal Extender] (29).

Similarly the Bottom Pyramid is also split into two halves both of which serve either of (XOR) the two roles: Ordinate's (39) (twelve in number) System-Controlled Human Server (7) and Ordinate's (37) (twelve in number) System-Controlled human Client (13). Further since the neck—Service Broker (5A)—is a weak vessel with pressures from all over for attention, it is enabled to engage in "cross-trading" ("Insider-trading," legalized by the Lord Jesus Christ -- Luke 16:1ff) by decussating (through information hiding—abstraction) the two inverted pyramidal halves of the brain (Top Pyramid) with the two upright pyramidal halves of the body (Bottom Pyramid) 75 percent of the time (i.e. 75% of all events), to stay on top of things as shown in the crossing of the Service-end of Lord's Necktie (27) and the Consumption-end of Lord's Necktie (29).

The decussating pyramidal architecture can also be likened to a river with streams joining the river on the upland and the tributaries in the lower end of the river where it merges with the ocean, with the middlemost member (Service Broker at Neck level of the Conglomerate) wielding the most power by being in the specific level in the architecture (Fig. 4MainBack). 75 percent of the Conglomerate/Corporate (Lord's) Service-end and Consumption-end of the Bus or Necktie (27, 29 in Fig. 4MainFront) are decussated at the Conglomerate's/Lord's (with a Capital 'L', denoting Lord of lords) Service Broker for the Conglomerate and at Corporate's Service Broker for Corporate's (lord's) respectively, for the purpose of giving control to the righteous and "poor in spirit" (i.e. the despairing who are righteous, in keeping with the *Sermon on the Mount* of the Lord Jesus Christ – Matthew 5:3,6,10 The NAS Bible) as they may not have the requisite qualifications to "neck"/head such a cyborgic body. And wherever the river flows there is produce.

5. Super-Augmented Persona/Bridespace (SB of Fig. 4TopSection)

The Lord (5) is first augmented by His own personal Necktie-Imitating Personal Extender and then He is further Super-Augmented by the Lord's Necktie-Imitating Personal Extender or simply referred as Lord's Necktie.

The Lord's Necktie-imitating Personal Extender, together with the Necked Service Oriented Architecture, the Augmented Personae in Bridespace, Super-Augmented Persona at the Neck, and Fine Linen Imitation enables the Rightful User to manifest as a Global Cyborgic Christ as we will see in the Operation. ***Agape TiE (Totally Integrated Environment)*** is the contemplated brand in which COAL (Church of Agape Love)—as stated in the Business Plan titled, "*Plan for the marriage of the Lamb with His Bride and the visible reign of Christ*"—virtually reduces the invention to practice.

OPERATION

Operation of Necktie-Imitating Personal Extender to Augment Persona of an Individual

In one embodiment using common Computer Vision techniques^{xii}, the camera, which may be placed as portable headgear or otherwise, recognizes Cues/Signs from Tags, which are either encoded for skin color or for special colored tape, placed on user's fingers or in the user's proximity with respect to (for instance, "pointing," with the index finger tag; or "grabbing," with two fingers' tags; or "capturing," with four tags) objects that are real or virtual. The software program processes the video stream data captured by the camera

and tracks the locations of the colored markers in N-Space with respect to the Camera location. The movements and arrangements of a set of tags are interpreted as specific encoded sign language that act as interaction instructions for a mini Projector (which may also be placed on the body or otherwise) to project visual information from Cyberspace on surfaces in User's Persona—say on a book that he is reading or on a wall in front of him or even on other representations of his Persona remotely held on other displays/holograms. The processing of the Extender itself may be done in a handheld electronic data processor. Thus the User's Persona is layered with pertinent Cyberspace and thereby it is augmented. As for the Cues they can be other media as well, including Audio.

Operation to manifest Embodiment Mode 1A—Global Cyborgic Christ with Super-augmented Persona (i.e. A Christocratic Kingdom-in-dispersion with a Globalized Federal)

Bridespace's (17, 21, 23 shown in Fig. 4MainFront) Subordinate Servant (39) within Virtuality-Bridespace Super-Augmented Lord's/Prime-Ordinate's Persona (5B shown in Fig. 4TopSection) by means of Necktie-Imitating Personal Extender (11) *Publishes* available Services (33) to Registry (15) through Service Broker (5A). After Bridespace's Subordinate Consumer (37) *Finds* a Service (33) offered by a Bridespace's Subordinate Servant (39) vis-à-vis the Service Broker (5A), Bridespace's Subordinate Servant (39) is called upon through Interaction (42) mediated (44) by the Service Broker (5A) within Virtuality-Bridespace Super-Augmented Lord's/Prime-Ordinate's Persona (5B) by Bridespace's Subordinate Consumer (37) for Service (33). Bridespace's Subordinate Servant (39) *Serves* Bridespace's Subordinate Consumer (37) through Messaging Services (19) over a Conglomerate/Corporate (Lord's) Service-end of bus or Necktie (27), an Extender Service (33) by Human Server (7) who interacts (31) with Extender Client (35) of Human Consumption Worker (13) who works for Bridespace's Subordinate Consumer (37) over a Conglomerate/Corporate (Lord's) Consumption-end of bus or Necktie (29).

The result—it is expected—is a new embodiment—a synergism—which will have features of those depicted in Jesus Christ's Transfiguration (cf. "The Holy Bible"). The Super-Augmented Conglomerate (or Lord's) Environment or Persona (5B, shown in Fig. 4TopSection) is thus built. In other words the shape will be that of an erect Global Cyborgic Conglomerate Christ with a Necked Service Oriented Architecture (Fig. 4MainBack) and the Lord will be with His Super-Augmented Persona.

Take for instance a scenario where it is implemented: a "Necktie-imitating Neurosurgeon's Personal Extender/Neurosurgeon's-domain-integrator (collator)" for a Neurosurgeon's team:

1. A person has a fatal accident in a remote village in India. Has not enough money to afford a Super Specialty Hospital care. Christian Surgeon in USA is willing to operate and a neurologist in UK is willing to diagnose with his Necktie-imitating Neurologist's-extender/Neurology-domain-integrator.

2. Neurologist's diagnostic enterprise extended by the "Necktie" is spread across the globe. Patient brought to nearby diagnostic lab/operation theater located near patient's village and the Neurologist sitting in UK diagnoses and sends report to Neurosurgeon in USA.
3. Neurosurgeon operates on the patient with his "Necktie" sitting in USA.
4. Patient pays part of the bill.
5. Another part is paid by Managed Care Company which has its own Necktie-imitating Corporate Extender/Managed-care-domain-integrator.
6. Etcetera.
7. All within the framework of Christ's "Necktie."

Note: The phrase "Operating System" is at best a feature of the self-serving, so called "thinking machine" and is therefore not found suitable for the present invention. Nor is the phrase "Control System" even though man in his perfect state, needs to be and will be on "top" of everything. The word "Environment" is used in order to not come across as demeaning because as said earlier the present embodiments of the invention, comprises of humans, who will be membering the system. However, there are certain controls delegated to an "Autonomic Digital Nervous System," aka "Operating System" for the purpose of executing grunt (factory) and automatic functions for which claims are also made as part of the whole.

ADDITIONAL EMBODIMENTS

1. Mode 0:

- a. Description: Independent Cyborgs (Human-machines or Humans with a Personal Extender);
- b. Operation: Built using a Personal Extender, he moves freely in N-Space under no authority;

2. Mode 1B:

- a. Description: Global Cyborgic Conglomerate Superhuman;
- b. Operation: Built using similar Components as in Mode 1A such as generalized assessments, but with cooperation possibly from the Anti-Christ Members;

3. Mode 2A and Mode 2B (Surgically Implantation of Mode 1A and Mode 1B Extender respectively):

- a. Description: Necktie-Imitating Personal Extender of Mode 1 with the virtual component of the Totally Integrated, Virtuality Augmented Real Personal Environment (i.e. the Super-Augmented Persona) concealed in the body specifically the vision in the eye and the audio in the ear,

etcetera;

- b. Operation: The build is partially by surgically implantation.

ADVANTAGES

a) Advantages of the Necked Service Oriented Architecture (Figs. 4MainFront, 4MainBack):

1. Notice that my embodiment employs more people than the Prior Art to do the same task, and perhaps giving more resting time for each individual. However, each individual is utilized strategically by placing each member/machine/corporate synergistically with respect to each other and therefore higher order problems are tackled. Thus it solves the problem of unemployment caused by Prior Art to a great degree;
2. Also to be noticed is the absence of a Service Contract as it was in the case of a Prior Art Service Oriented Architecture (Fig. 3a). The reason there are none because Service Contracts leaves out the human element in the transaction. Human element is especially necessary in finalizing the transaction. Therefore only an Interaction or an *Ad hoc* Contract is mentioned between the Servant and the Consumer. Forms may or may not be used depending upon the magnitude of the Service.
3. N-Entropy is reduced at all levels;
4. Minimal information (7 plus or minus 2 units/bytes) needs to be handled vis-à-vis Service Broker at neck level or for that matter at any level. This is because entropy is reduced at every level and only insight in the form of sense perception is sent above or below, whichever is appropriate;
5. *By decussating (hiding information by way of abstraction) of the pyramids enables the Service Broker to maintain non-partisan politics and keep the body together;*
6. The information economy of cognitively representing the Personal Extender with the Necktie imitation is quite substantial. It results in a high bandwidth interaction for those who need to learn and use the Necked Service Oriented Architecture or be the said Cyborg.

b) Advantages of the Necktie-Imitating Personal Extender for manifesting Embodiment Modes 1A, 1B, 2A, 2B:

1. The Necktie-Imitating Personal Extender through its metaphor environment results in high bandwidth communication and interaction (i.e. with high information economy) for the manifestation of all modes of embodiment. The "Imitating Real

Life Object” invention namely, the Necktie-Imitating Personal Extender has information economy for user learning to an extent that by itself it cognitively represents the following when placed in association with man and his built environment to manifest the Embodiments: In a sweeping motion, it can be thought of as integrating / incorporating all the heterogeneous members of a corporate body and marry them to the head by means of first “clothing” (wrapping by encapsulation—Blackbox modernization technique mentioned above) the User (organism) and the Machine (Cybernetics) into one whole called Cyborg together with an Augmented Persona. Secondly, when all the members in our environment are similarly “clothed” and humanistically ranked through the said custom appraisals by exploiting society’s value system—with Christ receiving the top rank for having laid down His sinless life for the world—and arranged as shown in Fig. 4MainBack, the result is the new and unexpected Global Cyborgic Conglomerate Christ. It “integrates”, “wraps” or “scrapes” all the heterogeneous objects of our domain and will *subject* the domain to the user/Christ through a Lord’s Super-Augmented Persona or Super-Augmented “Bridal” Metaphor Environment Control System (Prior art: Metaphor Environment Control System, US Patent 5,404,440), and will also in turn *extend* user’s mind as well as his body/Christ’s mind as well as His (Christ’s) body, proportionately/infinately, making Christ/God to whom he/He himself/Himself is subject to, supreme/all-in-all. It not only marries (interfaces) the rightful users with their superiors and subordinates (including objects in the natural, built and social environment) but also manifests the whole by “tying” them (or marrying them as in the oriental tradition), while maintaining the scope of the incorporation to the desirable objects through human component intervention and yet subjecting the rest to the conglomerate/nation as such through each member's capacity/authority/powers vested in them.

2. All the while it keeps the machine, namely, the cybernetic component, when it comes to individual’s Persona, and Servant/Client Cyborg (7+33 / 13+35), when it comes to Lord’s Environment/Persona, subservient to the user;
3. Through the unique Necktie “wrapper” (Metaphor Environment) for the electronic data processing and communication system with accessories and peripherals offers a perspective and a new meaning so much so that it is easily learned and operable in the mode of a class of Personal Extender/Environment Integrators (Prior art: Computer, Robot, Network-is-the-Computer, etc.), which results in the synergistic structural manifestation of Global Cyborgic Conglomerate Superhuman or Christ. Synergistic structural formation takes place when each member/citizen is appraised with the aid of said Assessments and ranked and placed in their respective positions. Thereby each member’s/citizen’s profession/occupation /designation/etc (which is essentially the embodiment of his mind) is integrated with the body as in a typical Administrative System or a Human Resource Management System or an Enterprise Resource Planner. Now as the spirits/minds are fluids by nature, they can be readily contained in an encasement or in our case, a wrapper. Therefore they are said to be integrated with the system and encased/wrapped to generate an

embodied cognition (for learning and using) of a Global Cyborgic Conglomerate Superhuman or Christ. The said Cyborg is a Superhuman or a Christ and not merely a group of people and machines put together because: to be Christ today means to be an Anointed Conglomerate, or everyone in the said Cyborgic embodiment is said to have the indwelling of the Spirit or the Holy Word; where the words or other expressions of the mind of the professor, etc that have been integrated into the system are the synergistic spirit and synergistic life of the said Cyborg (cf. John 6:63 New American Standard Bible);

4. Compliments the user and cognitively places him in the neck position in the head-and-members-of-the-body hierarchical relationship, where members could be any cyber or real world subordinates or other autonomic sub-systems. This placement of Christ and the members of His body – the sons of God – in the hierarchy, forces the flat world as well to get restructured (Figs. 4MainFront 25,19,15 in that order) and come under this hierarchy (Figs. 4MainFront 17,21,23 in that order). Thus the world will no longer be flat. Since it is a placement in a human like corporate body, the structure allows for delegation of low level jobs to be processed below and high level jobs to be handled at higher levels;
5. When each user adorns the Augmented Persona (Cyberspace Augmented Fleshspace) and arranged and aligned in like manner, it extends the power of the user/Cyborg so much so that an amount of synergy or Cyborg's insight is available to Users/Cyborgs, each according to their rank in the Necked Service Oriented Architecture;
6. It in-turn serves as an Integrator to empower and employ membership competencies/resources in an optimum and economic manner and also helps manage performance of subordinates;
7. Facilitates unlearning of the old paradigm and we are forced to think and learn the machine as a Necktie-Imitating Personal Extender. Since a necktie happens to be below the head, it therefore embodies a cognition of a Necktie-Imitating (hyper-extensible) Personal Extender with an integrating function;
8. Serves to implement a "participatory culture"^{xiii} and a Christocratic Participatory Democracy, where all are given their due, each according to their deeds with Christ Himself seated on the throne at the helm of affairs. For further reading, YouTube: *Globalization Tsunami and Global Federal of Christocracy*, Caleb Motupalli 2008-2009;
9. Aligns the membership with the head to orchestrate and accomplish with synergy any specific mega task/service or even minor tasks;
10. Serves to regulate the scope of each enterprise to be within a framework governed by Christ, while giving enough room for enterprise and expansion. This is because, both procuring and supplying aspects of the economy are handled by the architecture;
11. In combination with the necked Network-is-the-Computer, which serves as the

peripheral nervous system to virtually augment each member's real environment, the cross-section at the neck (Totally Integrated, Virtuality Augmented Real Christ's/Superhuman's Environment – Fig. 4TopSection View) serves as a command/information distribution/collaboration channel/environment to/with the various members of the body;

12. It produces a Lord's Super-Augmented Persona that enables the setting up of an eThrone for Christ for Christocracy. The synergy will be a giant leap for mankind to enter into an era of redemption of our bodies along with the rest of creation (Luke 21:28; Romans 8:23) and to come into the original perfect state that God created us in (except we will retain the knowledge of good and evil). This enables perfection or restoration of mankind through unity as prophesized in Hebrews 11:39-40;
13. Produces a theocratic economy by removing redundant bureaucratic objects and allowing all objects to focus on core and upper level competencies. A microcosmic case in point is the one proposed by Peter M. Foreman: The new system, which adopts a "total systems approach," he says, "enhances the safety and economics" of the system as a whole;
14. With respect to the incarnate Christ first and then the user, it will lend the environment gracefully to object oriented principles such as abstraction, encapsulation (wrapping), inheritance and polymorphism;
15. Facilitates the incorporation of a diversity of subordinate perspectives for "tuned diversity search"^{xiv}
16. Enables superiors in ordinate positions to break fixations on inaccurate hypotheses by having experts from diverse subordinate positions create mini-stories after reviewing partial data sets from the ordinate positions – "diversity anchoring for crowd-sourcing"^{xv};
17. It proposes a further research and development with infinite possibilities of extension on the one hand and integration/incorporation on the other.

c) Disadvantages in permitting the manifestations of Mode 0 Embodiments:

With the global network environment still amorphous and unstructured, gives the people having the ability of a Mode 0 Embodiment to extort free-labor^{xvi} through it and therefore Nth degree of Anarchy can result even beyond what is present today through prior art. This is more accentuated because this embodiment of the invention is bound to open up a Pandora box. Therefore the Normative Constraint is very high on ethical grounds and thus ruled out in the Cross-Consistency Assessment^{xvii}, to arrive at a "solution space".

CONCLUSION, RAMIFICATIONS, SCOPE:

Accordingly, the reader will see that, according to one embodiment of the invention, I have provided an architecture that has the potential to give substantial dominion to the

regulating body, that holy men, according to the principle of “whosoever has proven to bear the burden of many,” as well as able to feed or serve everyone alone need to “neck” and member that body. This is a desirable goal for all of mankind. For this to happen there need to be lords, and a Lord of those lords, and a LORD of that Lord--the Master of heaven and earth. In an egalitarian society that we live in, this may not go so well with many. But the egalitarians have a point or two. Firstly, according to Gandhi and other Socialists, it may appear as though there is only slight difference between all humans and therefore there should not be much disparity in wealth among them. But if one measures the effort it takes to cross a specific threshold to the next level...after a point, it becomes all that much more difficult. God has created us all in such a way that only one should win the race, with others close behind. This, so that the leader is not too far up ahead nor the followers too far behind to catch up so that mankind can advance together concertedly. Secondly, the next point the egalitarians have is: most of today’s lords who lord it over others do not deserve to be lords. They are actually anti-Christ’s subverting justice to the poor. Now cyberspace, if it is properly structured, has indeed the potential to bring these second wave illegal lords to justice by the third wave cyber-heroes.^{xviii} However, cyberspace itself is bogged down today by third wave cyber-thugs/anti-Christ’s. The leadership of the world in America made mistakes in Internet policy, and “the digital robber barons were set free to do whatever they liked” especially on the developing world’s unsuspecting second wave heroes who will take the brunt of the spillover of bad policy, as the globalization wave of tsunamic proportions, progresses.

That the so called advanced forms of government, like the American democracy, have failed the people is evident. In the best political book of 2007, *The Myth of the Rational Voter: Why Democracies Choose Bad Policies*, Bryan Caplan writes, “Democracies frequently adopt and maintain policies harmful for most people.” Nicholas D. Kristof commenting on the book in the New York Times as published in the Deccan Chronicle 1 August 2007 writes, “Churchill was right about democracy being the worst form of government, except for all the others that have been tried. Yet we should be able to respond to evidence of democracy’s failings with something more than Churchillian resignation.”

But there is One, or rather One System, who has not failed man till today, and that is Christ, the Word/Spirit—who is incarnate *in and through us* today.^{xix} When man sinned, he lost his dominion, which he otherwise enjoyed over all creation. Then Christ came on the scene and paid the just penalty for all those who put their trust in Him. But man continues to sin and brought upon himself the plagues of having women, money and machine to rule over him.

In an open manner, the power of the good/holy man is extended in the Christocratic Architecture namely, the Necked Service Oriented Architecture (NSOA) where humans play an important role in orchestrating the various services to accomplish a specific goal. Interaction between a Service and another service in a specific classification is specified by humans in a relatively ad-hoc way but within the domain/class boundaries. His position/rank in the bottom-up hierarchy is determined through holiness ranking received by a systematic customized assessments during corporate introspection at the marriage

supper of the Lamb, which takes place at all levels of the architecture where the highest holiness rank being that of Jesus Christ's who laid down His spotless and perfect life for all. To some holy men it is a Mental Prosthesis but to others it is a Personal Extender in order *to bear the burden of many above them in the bottom-up-hierarchy* w. r. t. those above the neck and a top-down hierarchy w. r. t. those below the neck. As said earlier, since the present architecture has the potential to give substantial governing powers to the regulator (service broker--5A) at the neck, only holy/godly/good men should “neck” and member the regulator. Therefore, we must include godly/holy/good men in the system design and specification, right from the start as partially stated by Captain Peter M. Foreman. The specifications for a holy/godly/good man are found in the Bible. The specification in its simplicity, states that the “first” (prime-minister who is *able* to feed all) need to be one who is “least” —a “the servant of all”—who has humbled himself, etcetera. Then arming/enthroning him with the “double edged IT sword” namely, the Necktie-Imitating Personal Extender becomes a matter of committing to prayer, them that have the Holy Spirit's commissioning for holy offices. In other words, they have been assessed to have respective individual S.H.A.P.E.s.^{xx}

After assessments are made, the well acknowledged holiness standard namely, *The Bible* (or The Word of God) as summarized in these articles could be used to rank the members:

1. Christ's own words, “Whoever wants to be first should be the servant of all.” (Note: To be servant of all, one must be able to serve all, as well as proved himself to be truly humble with all, which means giving each their due);
2. The book, *Rediscovering Holiness* by Dr. J. I. Packer;
3. The *12 Marks of Holiness* by J. C. Ryle.^{xxi}
4. *Evidences of a Humble Heart* by Brent Barnet^{xxii}

As slaves of righteousness (Romans 6:18) we ourselves, the users in the Christocratic Dominion Architecture (i.e. the NSOA), want to become bond-slaves in the chain of that command mentioned in:

1. 1 Corinthians 12:28-31, which is with respect to Apostles, Prophets, Teachers, Pastors etc as ones in-charge of the stewardship of the body of Christ;
2. 1 Corinthians 11:3, which is with respect to God, Christ, and every man and his wife;
3. Philippians 2:9-11, (that every knee bowed and every tongue confess that Jesus is Lord) which is with respect to Christ, everyone in heaven and on earth, to the glory of God the Father;
4. Genesis 1:28, which is with respect to mankind, living things and all non-living things in our environment

And thus the lost dominion could be restored to whom it belongs!

For those who have been enlightened and tasted the heavenly gift, the Word of God is more than a law of nature. By *the sense of guilt*—which, in the words of Theodor Reik, is the hallmark of any civilized humanity—we are constrained to order our steps in accordance to the Word of God/Law of love, whether we are consciously aware of it or not.

Even the Economist magazine with a cover story on April 2006 showed that Soft Paternalism, which can be realized through the said Christocratic Dominion Architecture, is the answer to today's uncontrolled, reckless and fast paced living. And I believe that it is also the answer to many corporate and national ills, including terrorism, whether they are economic or military. Soft Paternalism is not only the answer but that a total commitment alone rather than a flirtatious attitude would yield desirable results. Therefore a total solution approach rather than a point solutions' approach is maintained. In considering a viable standard for all matters of conscience (sense of guilt) for the purpose of arriving at the semantics of the system, the following definitive criterion is used:

Has anyone having kept all the laws of that particular scripture even though put to death was raised again from the dead, thus proving the integrity of the laws found therein? And is He also able to feed (serve) all either directly or indirectly?

Thus the knowledge of the Bible when transferred into the semantics of the said system, it takes on a *utilitarian* status not only for life after death but life hitherto and after.

Having established that there is a sense of guilt, apart from our other senses, automating the process of making saints becomes a matter of bringing the willing subjects under round-the-clock governance of the Soft Paternalistic Collaborative System.

We, who have tasted the love of Jesus, would gladly take His yoke upon us for it is easy and His burden is light. For, we will find rest for our souls (Matthew 11:28-30 New American Standard Bible).

Additional Advantages of Mode 1A , over Modes 0, 1B:

1. Ethical and safe;
2. Enables the aspect of membership representation by a representative at the Neck through the Global Cyborg's necktie;
3. Has the unexpected result of awakening/erecting, integrating and synergizing the "sleeping" fluid blob (network-is-the-computer) and its associated people together with other systems in the environment into a body;
4. The embodiment successfully solves a problem never before even recognized – the restoration of man to his original perfect state partially through such prosthetic means, which are in total the subduings of man;
5. Prior art is full of unsuccessful solutions that only tried to integrate the aspect of communication with information processing (namely Information and

Communication Technology –ICT; Computer mediated communication; Computer Mediated Collaboration; etc), user with the machine (User Centered Systems); Computer with Mechanical system (Computer Controlled Manufacturing and other Numerical Controlled Machines). My workable solution integrates all systems in the built environment with a body that is chiefly indwelt by the Holy Word, which is Spirit (John 6:63), which is God (John 4:24 New American Standard Bible), which is love (1 John 4:8 New American Standard Bible). And Love is nothing but Holy GOODS and SERVICES of the Holy Nation;

6. In the past though computers were seen adorned with neckties in advertisements and cartoons, my embodiments have the machine itself as the necktie imitation giving it the unappreciated advantage of being perceived as Personal Extender;
7. Moreover this modification of the computational machine with its peripherals and accessories, into a Personal Extender is not suggested by anyone;
8. It solves prior inoperability by personages to rule the world due to the said entropy from n-nefarious people. It is indeed a successful implementation of an ancient idea to rule the world. The common denominator being the church, it is fully equipped to provide a plurality of Personages to member the architecture at various levels of the said distributed “erect” Cyborg;
9. This embodiment is more workable as a problem solving system at large, than the computer, prior art, or the other embodiments because humans are always on top of things either to impose more problems or take control. What makes my system workable is that it solves the need to have command over our environment and subdue it. This is achieved by empowering the Born-Again Personages who will be the “Controller” Use Cases of the environment even at the initial stages of the designing and drafting of the system’s specifications;
10. The user and the machine (Prior art) are combined without the added requirement of new and costly manufacturing technologies to make the said embodiments of the invention. This synergistic result was not foreseeable by those well versed with the prior art;
11. Contrary to prior art teaching that the Big Beast of prophesy (Revelation 13 New American Standard Bible) can never be realized in and through a Computer, the said embodiments of the invention demonstrate the manifestation of the Global Cyborgic Conglomerate Superhuman Anti-Christ;
12. For centuries the glorious coming of Christ (i.e. with His angels—the harvesters) has been awaited. Thus the embodiment of the said invention solves the long-felt need for the visible presence and reign of Christ on earth;
13. Overall governability increased because entropy is reduced at every stage of the decussating pyramidal necked service architecture of the system world over.
14. The combination of the user and the system have been suggested in the User-

Centered System, however the combination did not take the embodied cognition of a Personal Extender on the one hand and the resulting Augmented Persona for the Cyborg on the other, except when both are encased in the said manner with the Necktie encasement/wrapper figuratively (Figs. 4Main), where the literal hardware may be anywhere on the said human-body/corporate/conglomerate. It is a Prosthetic/Extender Device and not a Turing Machine because, in real life the neck-tie is situated at the neck, right below the head—something which we know to be having the *preeminence*. Thus, even though the Prosthetic device may be smart to take care of certain tasks that come its way both from above and below without taking it up the hierarchy, it is still a “slave” by reason of the Necktie Metaphor Environment; specifically its placement below the head and its function. Even though Christ is Lord of lords, He remains the Prime-Servant—one who has come to serve and not be served. We who follow Him have long before willingly subscribed as His bond-slaves.

15. Moreover the combination of Computer and the user in a User-Centered System would not operate as a User-centered system because of the Computer Metaphor Environment barrier the Computer possesses. The Computer metaphor environment impedes the machine to be perceived as a real extender (Prosthesis) to the mind/self;
16. We also have the synergistic effect of the formation of a Super-Augmented Persona to serve as an eThrone at the “neck” for a Government to “sit on”;
17. References in the religious spectrum teach away from combining the spiritual with the material because man has historically yielded to the pleasures that the material world brings. Since Embodiment Mode 1A gives preeminence to the Spirit, I have shown that it is not only practical and ethical but also the right thing to do, given that there has been a sharp rise in civil and criminal injustices the world over and anarchy prevailing;
18. As the world is reeling under racism (even today in the form of racial profiling), castism and untouchability, a new form of classification/profiling through the said method is necessary to counter those forces;
19. This method is a must for those who want to be perfected in Christ because it is only as a whole we are perfected (John 14:19-20; Hebrews 11:38-40 NAS Bible). That is, those who went ahead of us live in Christ and Christ lives in us today, which means they live in us and are perfected even as we ourselves are being perfected;
20. This method is a must for those who want the whole world to believe that Jesus was sent from God because it is only when they see oneness in the Body that the whole world will believe (John 17:21-23);
21. The fact is that most of the prior art speak about a User-Interface which teach away from the User-centered System approach because user interfaces per se are needed only for independent automatons or Turing Machines. Through

embodied cognition the unique Cyberspace Augmented Persona/FleshSpace, in place of a User-Interface gives the meaning that digital and real interactions are integrated seamlessly as well as synergistically, at various levels in the Necked Service Oriented Architecture.

22. The Network Blob is hard to manage whereas Global Cyborgs even if they are many have manifestation as entities and can be dealt with;
23. The advantages of such an architected Soft Paternalism are that it empowers the engine of the government and streamlines trust.

Disadvantages of Mode 1A over Mode 1B:

Slow to implement and realize.

Disadvantages of Modes 2A/2B over Modes 1A/1B:

Costly and also perhaps Inconvenient.

Advantages of Mode 2A/2B:

Stealth.

While the above description contains many specificities, these should not be construed as limitations on the scope of any embodiment, but as exemplifications of the presently preferred embodiments thereof. Many other ramifications and variations are possible within the teachings of the various embodiments. For example the Vision and Projection parts of the Personal Extender apparatus can be literal to some extent as well as figurative, located anywhere, including over-head; the tags can be electronic RFIDs, instead of discrete colors or specific skin colors, etc. Also, the Architecture may be extrapolated/intrapolated from the one included here to a more universal/general one that has different levels of Lordships. Thus it can be shown that Jesus Christ is Lord of lords and the King of kings.

Included herein:

A method for augmenting the Persona of humans comprising the arranging of user and machine (including Computers, Network-is-the-Computer, etc) in a Head and Personal Extender relationship;

The method as described above, where in the Personal Extender is a Necktie Imitation;

The method as described above, where in the Body is Labor available in the world including in Cyberspace, in which case Cyberspace may be layered over the Persona/FleshSpace to achieve the desired result;

A means, namely the said Necked Service Oriented Architecture comprising of an Inverted Pyramidal Bridespace (Spiritual Support-space) and an Upright Pyramidal Worldspace (Physical Support-space);

A means as described above, where control in the head and operation in the body is

decussated;

A means as described above, where the greatest (most empowered) of the inverted pyramid is in the center (serving as the neck), and the greatest (most empowered) in the upright pyramid is just below the neck (i.e. at the top of the upright pyramid);

A means as described above and below paragraph, everyone is assessed with said custom set of assessments, ranked and placed;

A means as described above, where entropy is reduced through the said architecture whereby information from subordinates/superiors/Super-Augmented Persona is taken as sense perception (insight) and thus reducing the said n-entropy, and the presentation of 7 plus or minus 2 units of information to the Ordinate Human Component at any given time except when he is sleeping or taking rest.

A method for manifestation of Global Cyborgic Conglomerate Super-humans or Christs comprising:

A virtual wrapping of the membership/Citizenship of the said Global Cyborgic Conglomerate Christ/Superhuman with a global network of such apparatuses interconnected and fully integrated with all kinds of Goods and Services either supplied or procured through it by the membership/citizenship, which takes on an embodied cognition of having wrapped him with Fine-linen Clothing (Revelation 19:8; 1 Timothy 2:10) when it comes to Christ and Ordinary Clothing when it comes to a Super-human;

And virtually tying the said wrapped-up body, which now consists of a plurality of humans, systems, machines, organizations and other built environment using a computer and associated integration means comprising first an Assessment, then Ranking and then Placement in the System with a Necked Service Oriented Architecture.

To result in a cognition of having tied a virtual Neck-tie around his (Cyborg's) neck and thus rendering the computer-Network as a Necktie-imitating Christ's Extender that has the capability of bringing insight from below and above in the architecture as well as from everywhere else and perform tasks;

And also to result in a Super-Augmented Persona at the cross-section of the aforementioned "tied neck" by employing Bridespace and Worldspace in the said Architecture;

Note: Since Mechanical (Physical) systems can be controlled by electronic, digital and/or manual/biological means those components are merely given passing reference in the architecture but will be claimed nevertheless as parts of the said Cyborg.

Thus the scope of the invention should be determined by the claims (submitted later with the Non-Provisional Patent Application) and their legal equivalents, and not by the examples given.

As Herein described and illustrated in the figures of the accompanying drawings.

Dated this 16th Day of February 2010

MOTUPALLI, CALEB SURESH

Thus says the Lord on Sunday 21, October 2007 at 0:45 AM: **Unto you it is given to know the mystery of the kingdom of God: but unto them that are without, all *these* things are done in parables: That seeing they may see, and not perceive.**

Notes:

ⁱ *The Third Wave*, Alvin Toffler 1980

ⁱⁱ *Implications of Distributed Object Technology for Reengineering* by Nelson Weiderman et al, June 1997

ⁱⁱⁱ *Metaphor and the Cognitive Representation of Computing Systems* by John M. Carrol and John C. Thomas 1982

^{iv} *Technology, not globalization, driving wages down*, Jagdish Bhagawathi, Council on Foreign Relations website, 2008

^v Review of a Report in the Telegraph, Sep 2009 (Source: Deccan Chronicle)

^{vi} Review by W. T. Hind of the book *American Theocracy* found on a website, 2008

^{vii} Lord Jesus speaking to the Father in the Garden of Gethsemane, Matthew 26:42, The Bible

^{viii} The Neuroscientist David G. King, to a question: "Where is the brain?" concurs with this inventor

^{ix} *One Minute Manager* by Spencer Johnson

^x *The World is Flat*, Thomas L. Friedman

^{xi} *Be Born Again* by Caleb Motupalli, Skyfeast.org

^{xii} Open Source Software for Computer Vision may be obtained from SourceForge.net

^{xiii} Henry Jenkins, et al, MIT, 2006

^{xiv} Institute for Collaborative Innovation, 2006

^{xv} Institute for Collaborative Innovation, 2006

^{xvi} *Free Labour: Producing Culture for the Digital Economy*, Tiziana Terranova, 2003-2005 (Source: Wikipedia)

^{xvii} *General Morphological Analysis*, Tom Ritchey, 2002-2008: A purely normative constraint has been chosen because a Zwicky-box is perhaps difficult to construct for the n-dimensional parameter space of the problem complex;

^{xviii} cf. Alvin Toffler's *The Third Wave*

^{xix} *Form of Christ today* by Caleb Motupalli on Skyfeast.org

^{xx} The acronym is coined by Rick Warren, Pastor of Saddleback Church in California, USA, which stands for Spiritual Gifts, Heart, Ability, Personality, Experience.

^{xxi} As published in the July 2007 issue of "Decision" magazine

^{xxii} Liveasif.org 2009